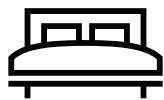




BOLON



HOSPITALITY
Sector



STOCKHOLM, SWEDEN – 1949

A young man called Nils-Erik Eklund had the foresight and business acumen to see a great opportunity in the piles of textile waste being produced at a neighbouring factory. From this waste, rag rugs were produced – and three generations and countless exciting twists and turns later, Bolon is a flooring solution that meets the exacting demands of retail businesses the world over.



ULRICEHAMN, SWEDEN – 2020

Bolon is an internationally acclaimed manufacturer of superior quality woven vinyl flooring. We draw our influences from the world of fashion, designing and producing unique woven floors for creative and inspiring environments. Our clients include international brands and we collaborate with world-famous designers and architects. Whilst this gives us immense satisfaction, we are equally proud to offer a

product that represents a pragmatic, functional and environmentally considerate choice for commercial premises of every type and size.

So welcome to our world – a world where innovation, borderless creativity and focused practicality combine to offer you flooring that is truly one of a kind.



Bolon By Jean Nouvel Design No.03

02	THE STORY
06	INTRO
12	DESIGNABILITY
18	CLEANABILITY
24	DURABILITY
26	ACOUSTIC FLOORING
28	SUSTAINABILITY
30	CASE STUDY
34	REFERENCES
50	CERTIFICATES / FAQ's
52	CONTACT



Bolon Customised

BOLON FLOORINGS AND HOTEL INTERIORS - A PERFECT MATCH

Our flooring collections combine aesthetic beauty with a woven tactile feeling. Together, a warm ambience is created that lifts the feeling of quality in corridors, rooms, public spaces or restaurants. From a practical perspective, features such as high fire resistance, ease of cleaning and effective noise absorption contribute to our flooring's superior performance wherever it is used in the hotel.

WHY BOLON IS A BETTER CHOICE

CHARACTERISTIC	BOLON	CARPET	RESILIENT VINYL, LINO, RUBBER	HARD WOOD	CONCRETE, STONE, CERAMIC
Return on Investment ¹	●	●	●	●	●
Appearance retention over time ²	●	●	●	●	●
Textile appearance	●	●	●	—	—
Comfort under foot	●	●	●	—	—
Impact sound reduction ³	●	●	●	●	●
Able to be disinfected	●	●	●	●	●
Slip resistance	●	●	●	●	●
Impervious material	●	—	●	—	●
Antistatic properties	●	●	●	●	●
Hypoallergenic properties	●	—	●	●	●
Ease of rolling loads	●	●	●	●	●
Resistance to microbial growth	●	●	●	—	●
Minimal chemical maintenance ⁴	●	●	●	●	●

● HIGH ● LOW — NOT APPLICABLE

¹Competitive durability properties, superior quality, and easy cleaning and maintenance allow for a high return of your initial investment. [See page 24](#)

²Unlike textile, carpet or hardwood, our flooring retains its appearance without flattening. [See page 24](#)

³Our acoustic flooring improves the decibel value from 11 dB to 17 dB. [See page 26](#)

⁴Cleaning can be accomplished with a vacuum cleaner, water, or a minimal dose of cleaning agent. [See page 18](#)



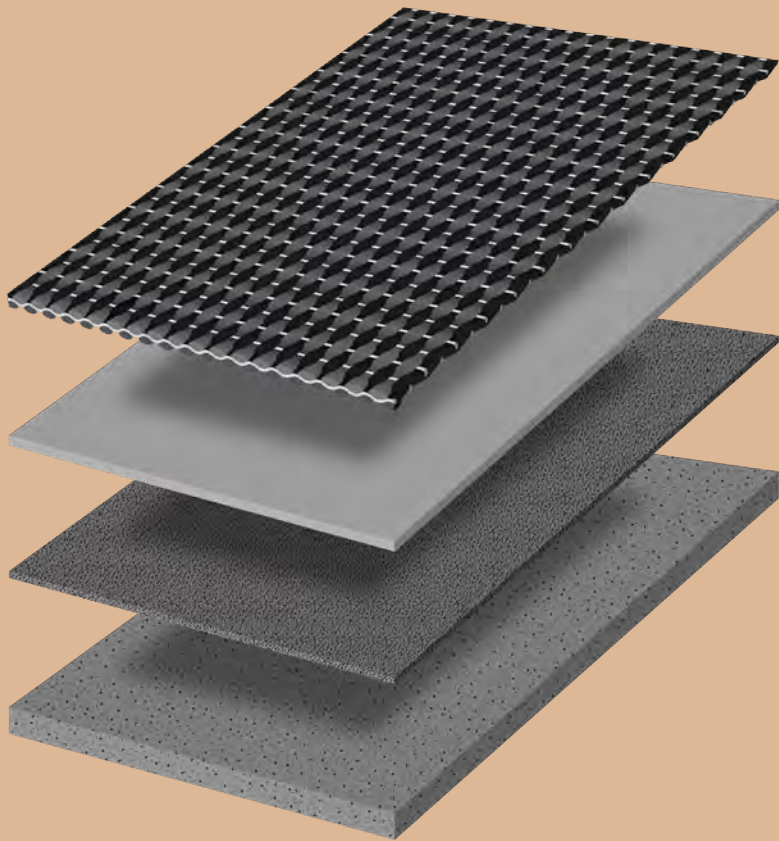
Bolon Customised



Bolon BKB Sisal Plain Mole

A CLOSER LOOK OF OUR PRODUCT

Bolon floorings are composed of four layers, one weave and three backing, giving the product its unique qualities. The weave layer is formed by vinyl warp and weft threads tightly woven together. The variations of the warp and weft yarn together with the different weaving techniques gives Bolon flooring its vast design alternatives.



- 1. WEAVE**
The weave layer consists of vinyl warp and weft yarns tightly woven together.
- 2. UPPER LAYER**
The upper backing layer gives the flooring its fire-protective properties.
- 3. GLASS FIBRE**
The middle backing layer consists of glass fibre giving the flooring dimension and stability.
- 4. SOLID BASE**
The bottom backing layer contains recycled material and is changeable for specific needs such as acoustics.

DESIGN FLEXIBILITY

Designing a hotel is an art that demands knowledge and experience of combining guest experience and atmosphere with practical material choices and functionality. The design-result must be both attractive and easy to maintain. With Bolon you are set with long-lasting and functional flooring with nearly endless sophisticated design options.

Creating a hotel interior with Bolon flooring as a foundation gives you the freedom to play with shapes, colours, and patterns. Choose from existing collections or customise your own design with the Bolon by You-tool. The floorings are supplied in rolls, 50x50 cm tiles, planks or as Bolon Studio™-tiles. Our collections and design tools are divided into:

- › Original collections – all our collections are designed to last and bring beauty to any interior. Pick your favourite.
- › Tile design tool –visually combine tiles with designs in our online tool.
- › Bolon by You – create a unique and personalized flooring design with a simple online tool.
- › Collaborative collections – we team up with some of the world's most renowned designers to keep pushing the boundaries of flooring design.
- › Customised floorings – we're more than happy to help you create your project-specific flooring.

A UNIQUE VISUAL EXPERIENCE

- › **HIGH-END DESIGN** – every collection is a visual, sensual treat. Our designs add character and ambience to any area of a commercial interior.
- › **LIVING DESIGN** – the reflective qualities of our flooring and its ability to play with light and create 3D effects and structure add a unique design dynamic.
- › **FLEXIBILITY** – Bolon floorings can be designed in many colours, shapes and patterns. The only boundaries are your imagination.
- › **WOVEN STRUCTURE** – the unique vinyl weave provides a tactile woven touch with great durability qualities.



CUSTOMISATION FOR YOUR PROJECT

Sometimes, an interior project demands unique design to deliver that final touch making all the difference. We're more than happy to help you create that project specific flooring. Feel free to contact us with your idea and let us become a part of your creative process. The design possibilities are nearly endless.

For more information, please contact:
info@bolon.com



Located in Finnish Lapland, Javri Lodge is a wooden chalet-style boutique hotel combining contemporary design with local tradition. When designing the historical log cabin, the architects used a customised flooring with a Silence pattern to create an ambiance that replicates the calmness of the surrounding northern nature.



Bolon Create Comar / Bolon Studio™ Wing Now Copper / Ethnic Gabna / Create Comar

BOLON STUDIO™ CREATIVITY ON YOUR TERMS

Room, corridors, public areas or restaurants - any part of a hotel environment can be transformed by creative and inspiring interiors. Our Bolon Studio™ concept makes it easier than ever to achieve this. With Bolon Studio™, you can explore different sizes and shapes to let creativity truly express itself. Consider colour choice, room characteristics and how the light falls – and discover how Bolon flooring adds unique ambience and character to your interior.



LINK



HEXAGON



WING



DECO



PLANK



SCALE



WAVE



TRIANGLE
550



TRIANGLE
650



TRIANGLE
754

RIGHT FLOORING FOR
THE RIGHT PLACE

Bolon flooring can be used in most areas of an interior design, as it is both durable and easy to clean. However, an efficient entry system will save your floor from 85% of all incoming dirt. Moreover, you should choose the colour of the flooring with care. Start by considering the function and the overall surroundings of the space where you plan to use Bolon flooring. If you need assistance, we are more than happy to guide you.

EASY TO CLEAN
EASY TO USE

In any commercial interior project, cleaning and maintenance of flooring is always an issue. With Bolon flooring, most cleaning needs can be accomplished with a vacuum cleaner, scrubbing brush, water and a minimal dose of stain remover. A badly maintained floor, or a floor that has become extremely dirty for another reason, can in most cases be restored to an almost new condition. We called this method zeroing.

Correctly performed maintenance prolongs the floor's useful life. Factors such as colour, design or where the flooring is installed affect the need for cleaning. Mechanical cleaning can be performed with appropriate roller brush or orbital cleaning machines. For daily cleaning, we recommend vacuuming.

[Click here](#) for further instructions about cleaning.



Vacuum cleaner



Stain remover



Water



Scrubbing brush





STAIN REMOVAL

STAIN	CLEAN WITH
Chocolate, fat, juice, cream, coffee, beer, wine*	Hot water + strong cleaner
Asphalt, oil, shoecream, chalk, ink	Chemically pure petrol
Blood	Cold water – ammonia if needed
Rust	Light acidic (pH3-4) cleaner
Water-based glue	Hot water
Solvent-based glue	Chemically pure petrol
Marks from shoes*	Rub dry with cloth
Chewing gum*	Hot steam or freeze spray

[*Click here](#) to see our instructional films about cleaning.

PRACTICAL ADVANTAGES

- **EASY TO CLEAN** - the vast majority of cleaning tasks can be accomplished with a vacuum cleaner, water, scrubbing brush and a minimal dose of cleaning agent.
- **HYGIENIC** - Our floorings are impervious to any spill or mess which makes them easy to clean and maintain.
- **BETTER INDOOR AIR QUALITY** - Bolon has VOC (Volatile Organic Compound) emissions well below recommended levels.

“Great flooring design is a delicate mix of beauty and function.”

— MARIE EKLUND
Owner and CEO of Bolon



A SMARTER INVESTMENT

Bolon flooring has a long product lifetime during which we offer warranties up to 15 years. And with its competitive durability properties, superior quality, and easy cleaning and maintenance routines it ensures for a high return of your initial investment.

LONG TERM BENEFITS

- › **DURABILITY** – all our collections have ISO 10874 durability class 32 or 33, which ensures for a long product life.
- › **WARRANTY** – all our flooring collections comes with 10 – or 15- years warranty.
- › **APPEARANCE RETENTION** – unlike textile, carpet or hardwood, our flooring retains its appearance without flattening.
- › **KNOWLEDGE & EXPERIENCE** – our unique background and product together with our position as a world leader in woven design flooring make Bolon flooring a safe and sound investment.



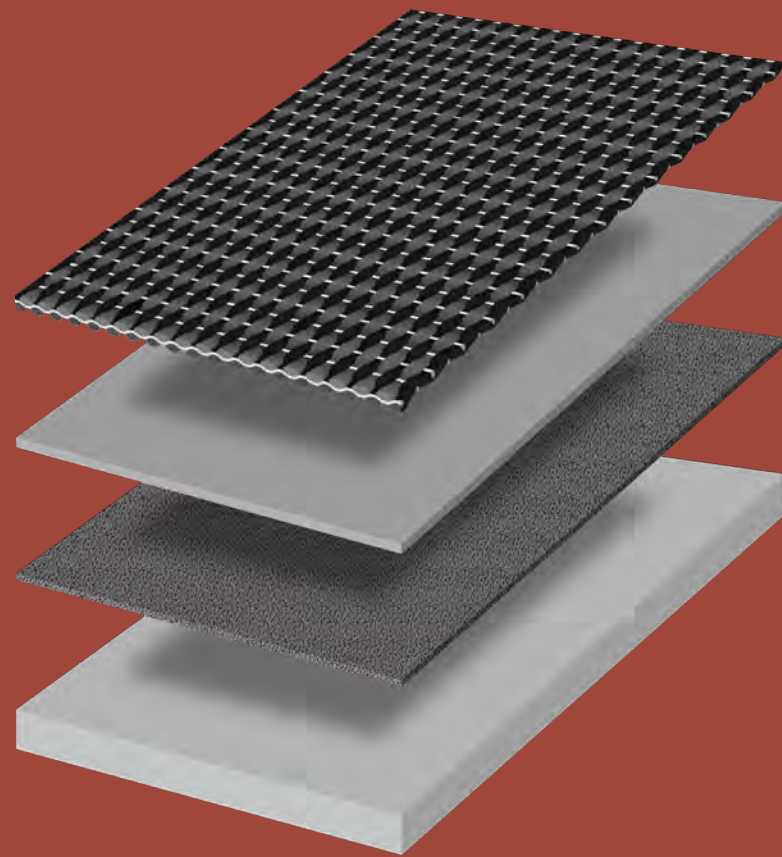
Bolon By You Geometric

DESIGNING WITH ACOUSTIC FLOORINGS

Sound insulation is an essential feature in a hotel building as it prevents transmission of sound disturbances. Fortunately, all Bolon floorings are available with Impact Sound Insulation (ISI) as a customised option. The thicker insulation layer improves the decibel value from 11 dB to 17 dB. This flooring enhancement is a perfect choice for spaces such as hotel bedrooms, busy lobbies, corridors, or other high foot traffic areas.

SILENCE WITHOUT COMPROMISE

- **DECIBEL VALUE** – reduced sound level to the adjacent floor is 17 dB.
- **GREAT PERFORMANCE** – the sound insulation layer doesn't affect the floorings performative qualities such as fire rating, durability or warranty.
- **THICKER FLOORING** – the insulation layer makes the flooring thicker 5 mm matching other flooring types.
- **SOFTER** – another great benefit of acoustic Bolon flooring is that it makes it softer and more comfortable to walk on.



1. WEAVE

The weave layer consists of vinyl warp and weft yarns tightly woven together.

2. UPPER LAYER

The upper backing layer gives the flooring its fire-protective properties.

3. GLASS FIBRE

The middle backing layer consists of glass fibre giving the flooring dimension and stability.

4. IMPACT SOUND INSULATION

The bottom backing layer consists of a thick solid base which offers unique characteristics such as sound insulation.



Bolon By You Stripe

SUSTAINABILITY AS STANDARD

A Bolon flooring is a sustainable choice considering its long product lifetime, outstanding durability properties, Eco-friendly cleaning, and the climate neutral manufacturing in Ulricehamn Sweden. Moreover, the PVC used in the floorings are solely bought from Best Environmental Practice suppliers.

We also recycle our own, and even others, production waste at our integrated recycling plant. And by re-using the material producing new floorings, our end product is resource-efficient with a lower environmental impact.

ENVIRONMENTAL PERFORMANCE OF BOLON FLOORINGS

- **RECYCLED WASTE** - All collections contain recycled material from pre-consumer waste.
- **RENEWABLE ENERGY** - We use 100% renewable energy in our factory.
- **BEST PRACTICE PVC** - We only use best practice PVC and source raw material from the greenest polymer factories.
- **PHthalate FREE** - All our products are 100% phthalate free.
- **INTEGRATED RECYCLING** - Our recycling plant is integrated with our factory.
- **CLEAN MAINTENANCE** - Cleaning can in, most cases, be performed with just water.
- **GREEN TRANSPORT** - We primarily work with local suppliers which reduces transport-related environmental impact.



Bolon Botanic Cilia



THOUGHTFULLY DESIGNED NATURE HAVEN

Located in Saariselkä, 260 km north of the Arctic Circle in Finnish Lapland, Javri Lodge claims to be the northernmost hotel in the world. It's a wooden chalet-style boutique hotel that attracts visitors who are seeking an escape from a hectic life, often craving an opportunity to experience an intimate connection with nature – while simultaneously staying in a hotel that reflects their ecological and sustainable values.

CHALLENGE Traditional and Contemporary

The locals z are the founders and owners of Javri Lodge. They wanted to create a contemporary hotel experience without compromising with the nature or heritage of the north. “Since we took over the hotel three years ago, it has become clear that respect for nature, guests’ appreciation of purity and other general ecological and ethical values are the most important aspects of our hotel philosophy. So those were the most important values when we started to develop the building”, says the Mehtajarvi couple.

VISION The Sum of Impressions

The most important aspect in the choice of flooring was not to choose a design element that would be a competitor to the walls but rather highlight the wooden feeling of the lodge.

“We wanted those kinds of old-style elements in the wooden building. The flooring we fell for is very much like these old-style linen cloths, used in saunas as a seat cover in Finnish “laudeliina”. The pattern is exactly like that... The kind we used in the 60’s and 70’s – which happens to be the same time those log-walls were built”, says Juha.

SOLUTION Customised and durable

Javri Lodge is partly made of Kelohirsi – a wooden material characteristic of its strong nature-inspired aesthetics. Javri’s wooden frame structure along with the customised Bolon flooring with a Silence pattern contributes to a high indoor air quality and good acoustics while simultaneously providing a durable approach to design.



“ We can see that the design element that has raised the most interest among our visitors is by far the flooring. ”

—JUHA MEHTAJAVRI
Co-founder of Javri Lodge



RESTAURANTS



LOUNGE

HOTEL ROOM



Bolon Artisan Slate / Bolon Studio™ Triangle Artisan Jade

LOBBY



CONFERENCE ROOM



Bolon Silence Ocular, Sense, Visual, Gracious, Balance

CORRIDOR

GYM



SPA



PROOF OF PERFORMANCE

Our products and processes have been awarded stringent environmental certifications for buildings including GreenTag, BREEAM and Floorscore, which contribute to a higher LEED rating. These third-party verified certifications are one way of demonstrating and communicating our environmental quality. Our declarations provide transparency and availability for everyone. Because Bolon operates in many different markets, we have many different certificates and declarations.

[Click here](#) to read more about our certificates.



FREQUENTLY ASKED QUESTIONS



TECHNICAL PERFORMANCE

IS THE FLOORING ACOUSTIC?

Our flooring's impact sound insulation varies for different products from 11dB to 17dB. Make sure to read the designated product specification.

WHAT IS THE FIRE RATING OF YOUR FLOORING?

Bolon flooring complies with the requirements in the European, standard En 13501-1, fire classification of construction products, and has achieved the rating just below non-combustible material. This classification is called BflS1 and includes both fire and smoke production. Bolon flooring is approved for emergency exit routes in Sweden.

WHAT IS THE FLOORING'S SLIP RESISTANCE ASSESSMENT?

CE certification for the floor includes a slip resistance assessment. The lowest value for materials used in public areas is 0,3. Bolon's collections have a slip resistance value of >0.5

IS BOLON FLOORING ANTI-STATIC?

Bolon flooring does not generate a static charge but it cannot be classified as an electrostatic dissipating floor. Bolon flooring has been tested and fulfill the requirements of the European Directive EN 1815.



INSTALLATION

CAN BOLON FLOORING BE INSTALLED ON CHIPBOARD, PLYWOOD AND CONCRETE, PORCELAIN AND CERAMIC FLOORING?

Yes. It is important with a leveled subfloor for a good result. Make sure that the adhesive used is compatible with vinyl and the subfloor.

CAN I USE BOLON FLOORING ON RAISED FLOORS?

Yes. Especially our tiles work excellent for raised floors. For more information contact your local partner.



HEALTH AND WELLNESS

IS BOLON FLOORING HEALTHY AND SAFE?

Yes. Our floors are free from additives such as phthalates or heavy metals. The PVC used comes from environmentally certified factories that have low emissions and efficient energy use. Moreover, our floors have low emission values of VOC and are featured in various hospitals and healthcare practices around the world. All collections are recommended by The Norwegian Asthma and Allergy Association (NAAF).



SUSTAINABILITY

DO YOU CALCULATE THE FLOORING'S ENVIRONMENTAL IMPACT ACROSS THE WHOLE LIFE-CYCLE?

Yes, we have performed so-called EPD's, life cycle analyses, on all our collections. The analyses made it clear that the biggest climate impact comes from the production of the vinyl raw material. We will reduce this climate impact in the coming years.

WHICH PRODUCTS CONTAIN RECYCLED MATERIAL?

All of our collections contain recycled materials. The proportion of recycled material varies between 10-30% of the total material used.

IS PLASTIC A GOOD MATERIAL FOR FLOORING?

Plastic can be a beneficial material for flooring in particular. This depends on the type of plastic used and how it is handled. The plastic we use is hardwearing with a 10- or 15- year guarantee. Our raw material, PVC, can be recycled up to seven times and it is completely free of additives such as phthalates or heavy metals. Our floors have low emission values and are, therefore, approved for hospital environments. The floors are also easy to clean, usually, plain water is all that's needed to clean them. Based on these facts, a plastic floor from Bolon is many times a good environmental option compared to other flooring.

**For more information,
please reach out to**

BOLON

Bolon HQ: Industrivägen 12, 523 90 Ulricehamn, Sweden
bolon.com | info@bolon.com | [@bolonofficial](https://www.instagram.com/bolonofficial)